

WCSD
Secondary
Schools Boundary
Discussion

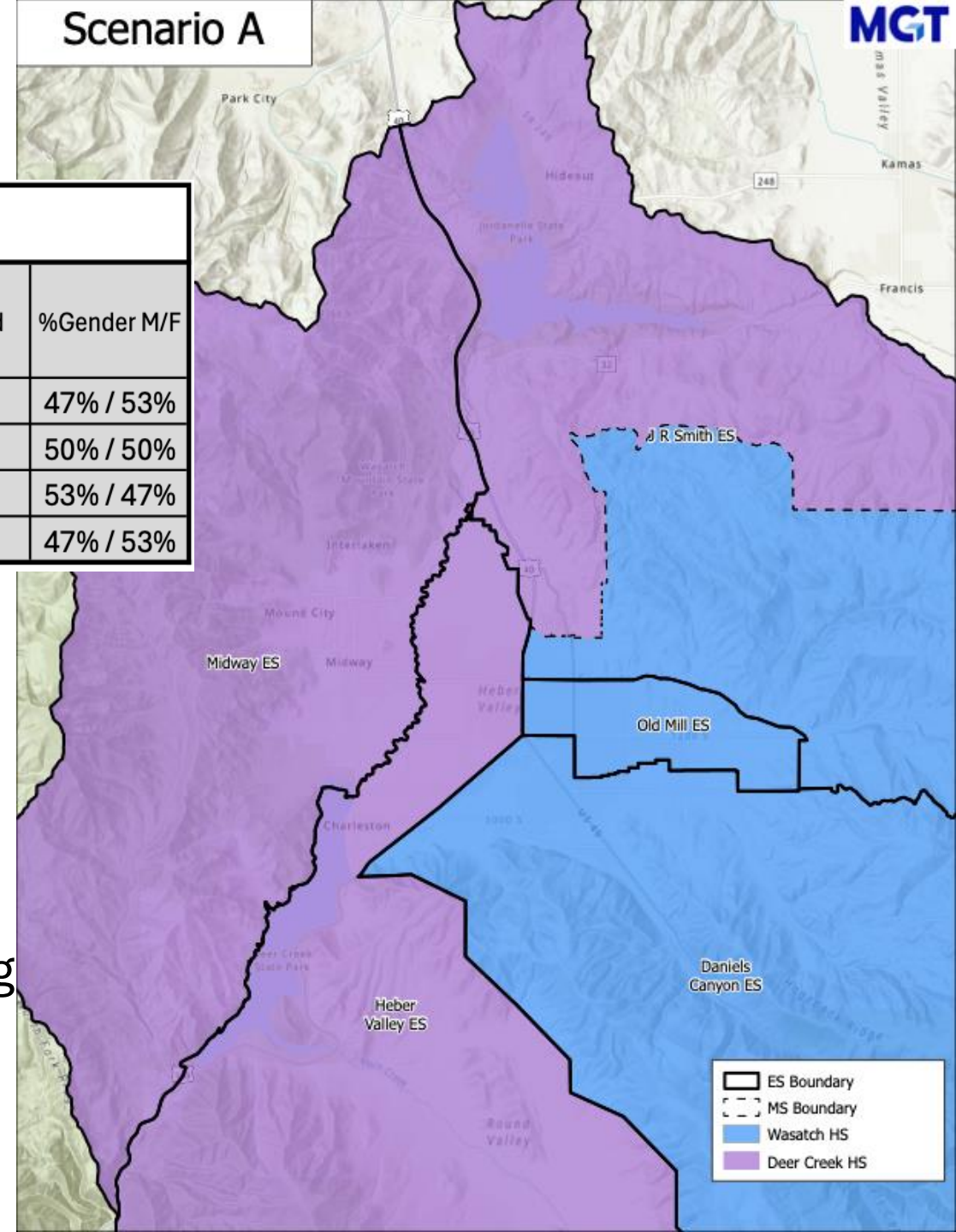
October 28, 2025



Scenario A:

Plan A Scenario

Name	2026 Students	2028 Students	2030 Students	% Diversity	% English Language Learners	% Free / Reduced Lunch	% Gender M/F
Deer Creek High School	1082	1001	942	26.5%	5.8%	28.0%	47% / 53%
Wasatch High School	1540	1577	1615	23.7%	5.2%	23.1%	50% / 50%
Rocky Mountain Middle School	678	707	657	28.8%	8.4%	34.2%	53% / 47%
Timpanogos Middle School	1026	1010	941	23.3%	7.9%	26.9%	47% / 53%

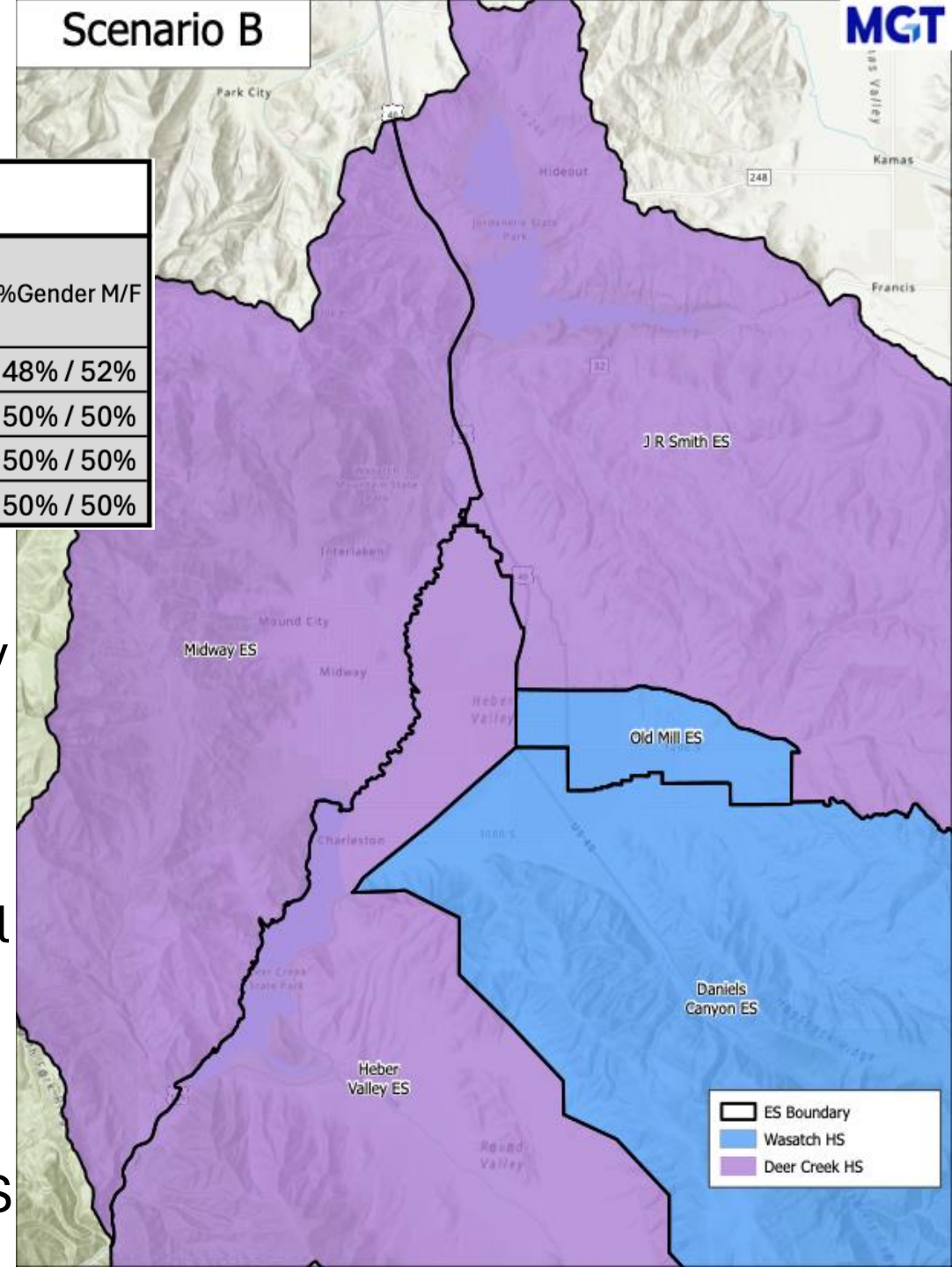


Scenario Description

- Maintains the current boundaries of Rocky Mountain Middle School and Timpanogos Middle School as the boundaries for the high schools
- Deer Creek HS will be smaller in enrollment by approx. 500 students than Wasatch HS at opening
- Projections suggest that enrollment numbers will remain smaller for Deer Creek HS than Wasatch HS

Scenario B:

Scenario B



Plan B Scenario

Name	2026 Students	2028 Students	2030 Students	% Diversity	% English Language Learners	% Free / Reduced Lunch	% Gender M/F
Deer Creek High School	1425	1320	1248	26.3%	5.7%	27.2%	48% / 52%
Wasatch High School	1198	1257	1309	23.2%	5.2%	22.6%	50% / 50%
Rocky Mountain Middle School	880	921	852	28.2%	8.5%	33.7%	50% / 50%
Timpanogos Middle School	823	796	746	22.5%	7.7%	25.6%	50% / 50%

Scenario Description:

- This scenario keeps students with their elementary peers through middle and high school.
- Deer Creek boundary includes the current enrollment areas for J.R. Smith, Heber Valley, and Midway to feed into Rocky Mountain Middle School and then Deer Creek HS
- Wasatch boundary includes the current enrollment areas Old Mill and Daniels Canyon to feed into Timpanogos Middle and then Wasatch HS

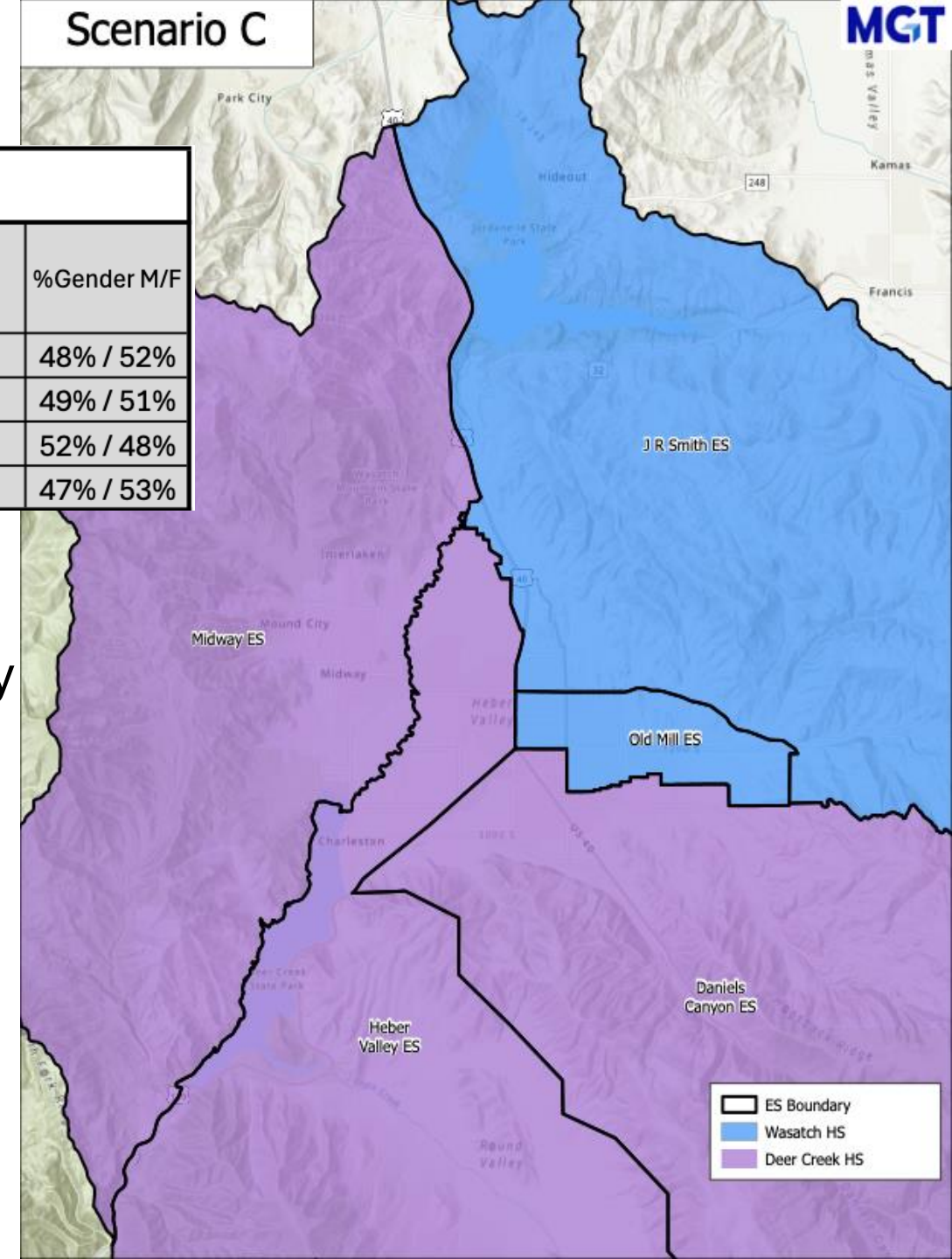
Scenario: C

Scenario C

MGT

Plan C Scenario

Name	2026 Students	2028 Students	2030 Students	% Diversity	% English Language Learners	% Free / Reduced Lunch	% Gender M/F
Deer Creek High School	1379	1318	1285	26.3%	6.2%	28.3%	48% / 52%
Wasatch High School	1243	1259	1272	23.2%	4.6%	21.4%	49% / 51%
Rocky Mountain Middle School	907	912	882	27.3%	9.3%	32.3%	52% / 48%
Timpanogos Middle School	797	805	716	23.5%	6.8%	27.1%	47% / 53%



Scenario Description:

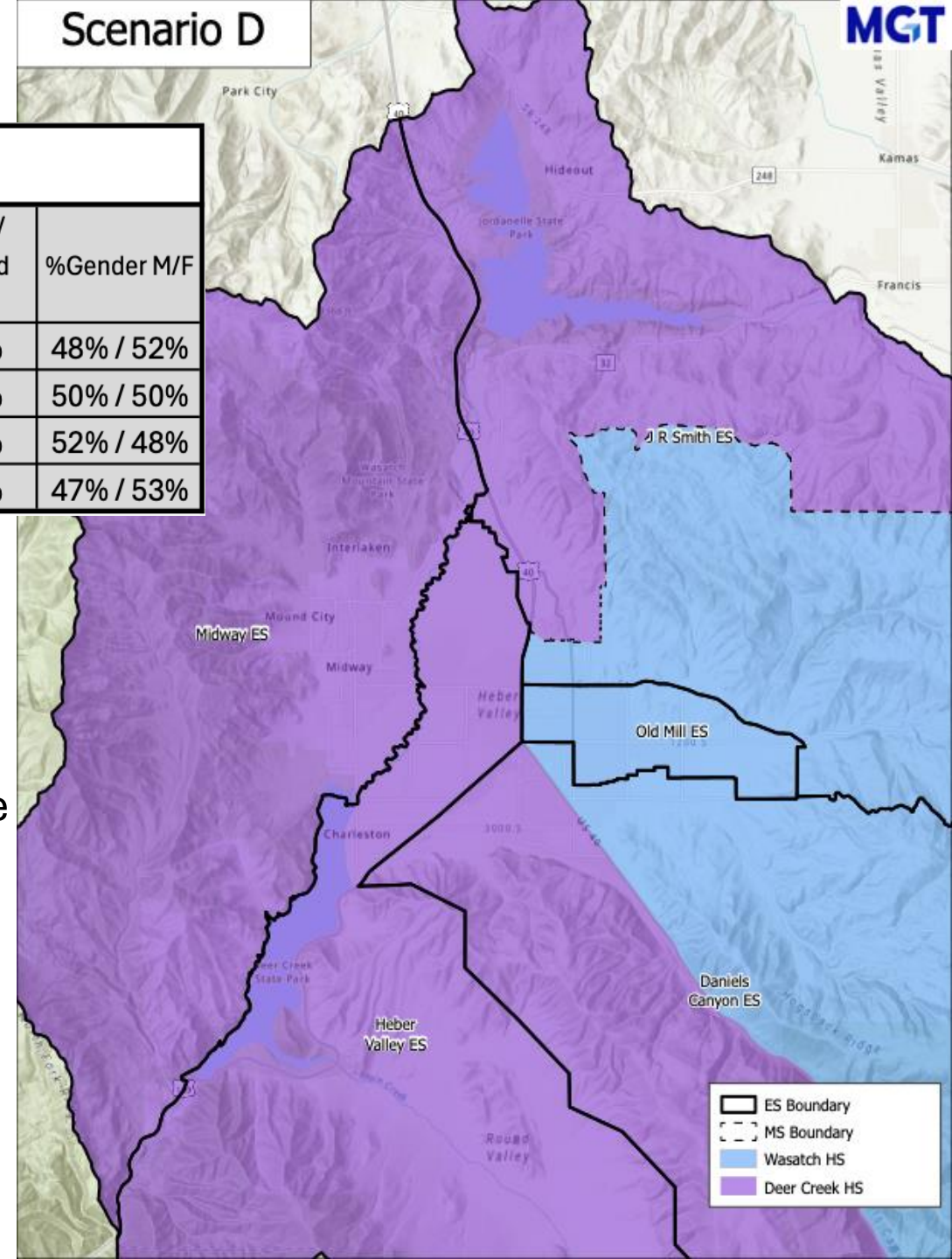
- This scenario keeps students with their elementary peers through middle and high school.
- Deer Creek boundary includes the current DCE, HVE, and MES boundaries for enrollment for RMMS and DCHS.
- Wasatch boundary includes the current JRS and OME boundaries for TMS and WHS

Scenario: D

Scenario D

Plan D Scenario

Name	2026 Students	2028 Students	2030 Students	% Diversity	% English Language Learners	% Free / Reduced Lunch	% Gender M/F
Deer Creek High School	1453	1355	1273	27.5%	6.3%	28.5%	48% / 52%
Wasatch High School	1169	1222	1283	21.4%	4.3%	20.8%	50% / 50%
Rocky Mountain Middle School	920	931	854	28.4%	8.7%	33.3%	52% / 48%
Timpanogos Middle School	783	785	744	21.9%	7.4%	25.6%	47% / 53%

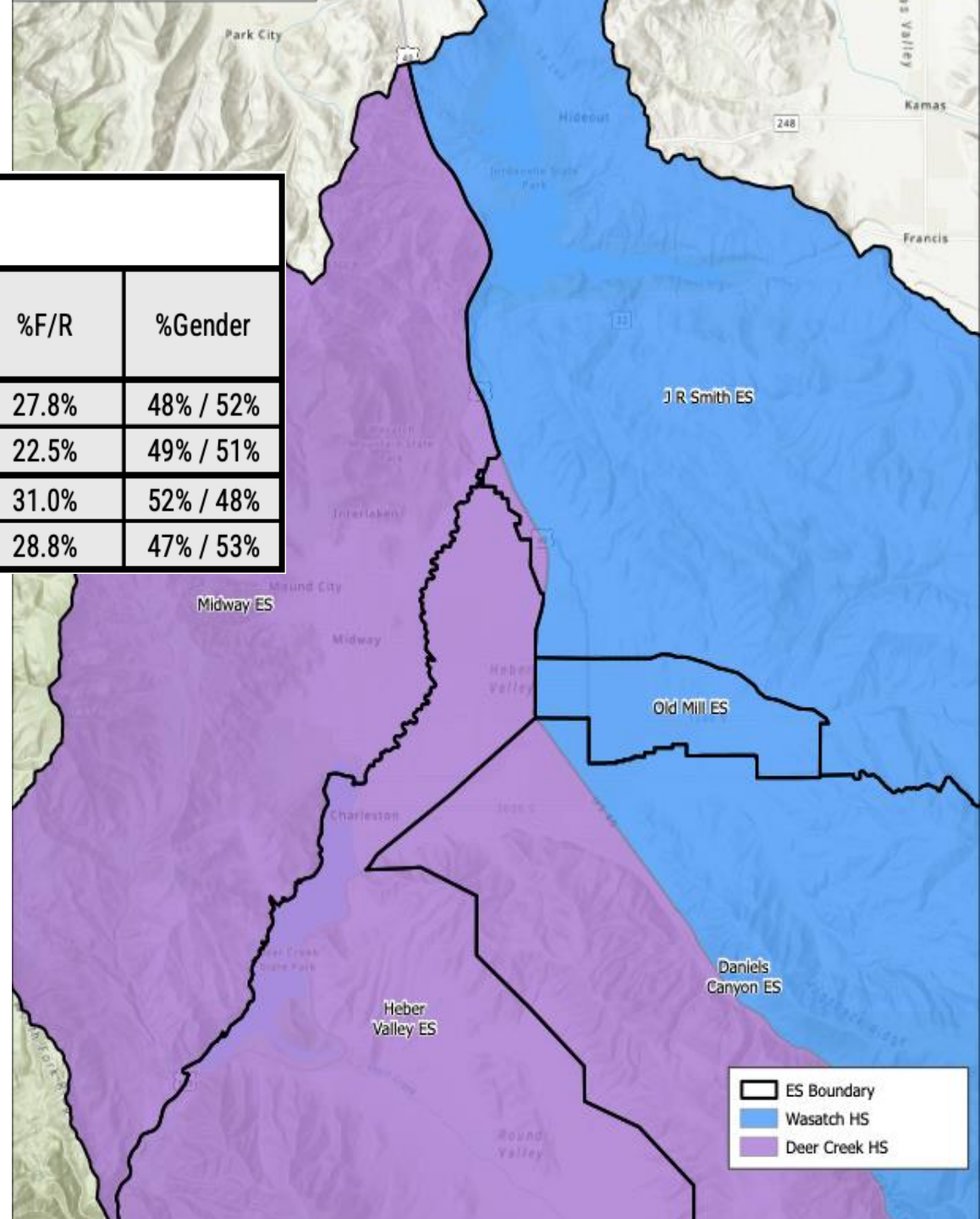


Scenario Description:

- Daniels Canyon Elementary and J.R. Smith Elementary student peers will be split from peers in the middle and high schools.
- This scenario uses Utah Route 40 as natural boundary on the south end of the valley



Scenario: E



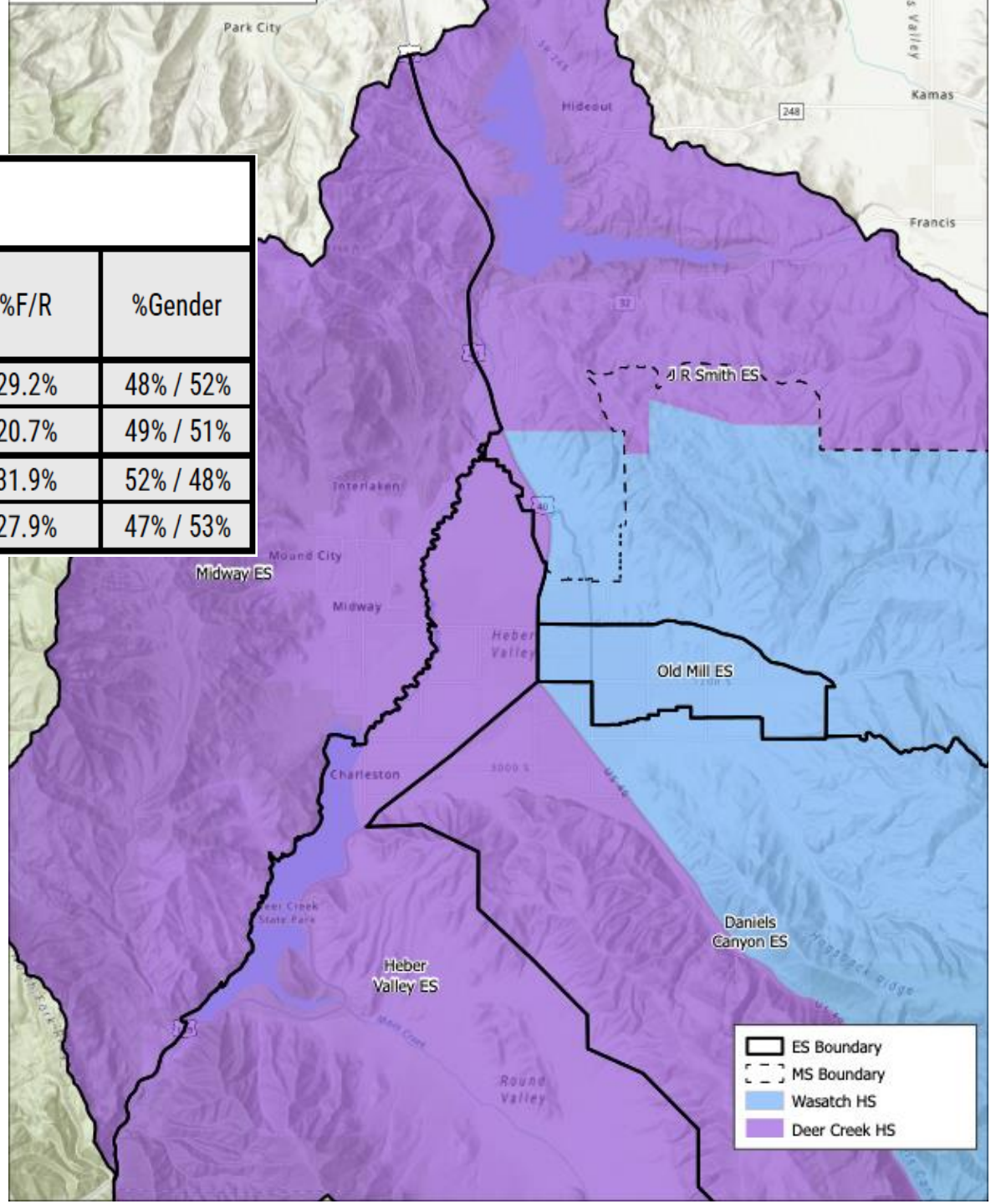
Plan E Scenario

Name	2026 Students	2028 Students	2030 Students	%Div	%ELL	%F/R	%Gender
Deer Creek HS	1258	1175	1090	25.6%	6.0%	27.8%	48% / 52%
Wasatch HS	1365	1402	1467	24.2%	5.0%	22.5%	49% / 51%
Rocky Mountain MS	812	820	745	26.1%	8.5%	31.0%	52% / 48%
Timpanogos MS	891	897	852	24.9%	7.7%	28.8%	47% / 53%

Scenario G

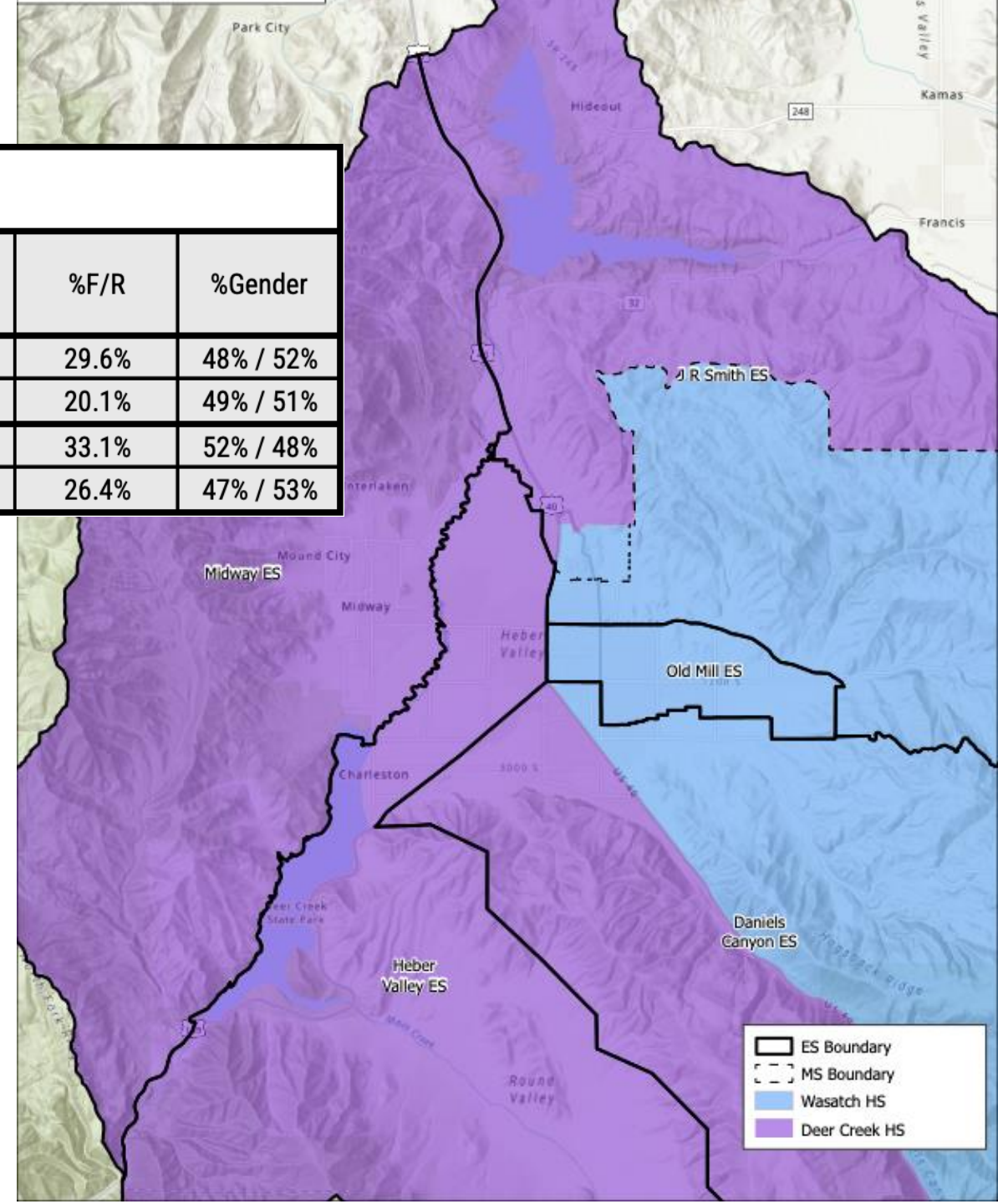
Plan G Scenario

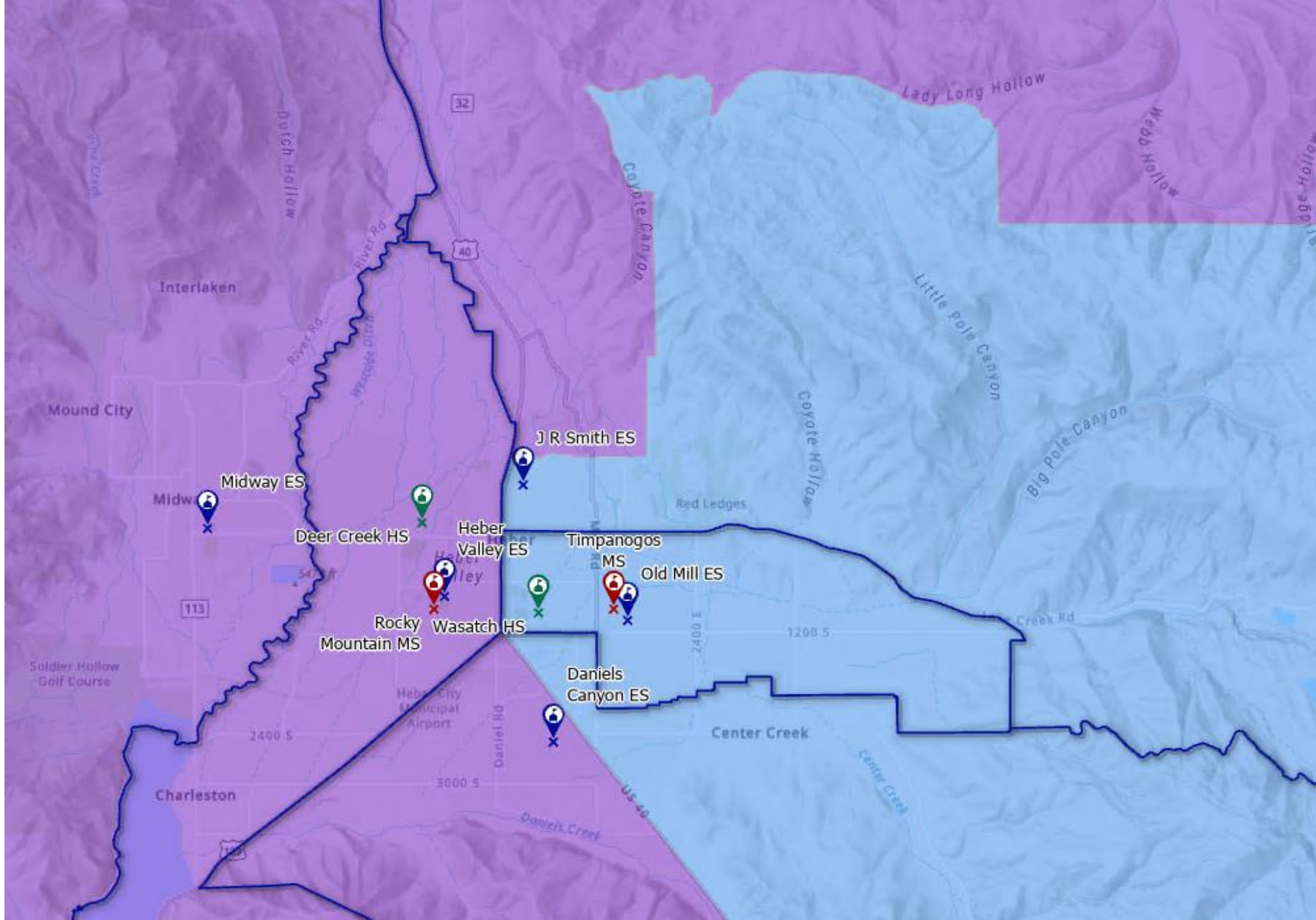
Name	2026 Students	2028 Students	2030 Students	%Div	%ELL	%F/R	%Gender
Deer Creek HS	1304	1219	1151	27.4%	6.4%	29.2%	48% / 52%
Wasatch HS	1319	1358	1405	22.1%	4.4%	20.7%	49% / 51%
Rocky Mountain MS	844	859	777	27.2%	9.0%	31.9%	52% / 48%
Timpanogos MS	859	858	820	23.8%	7.2%	27.9%	47% / 53%

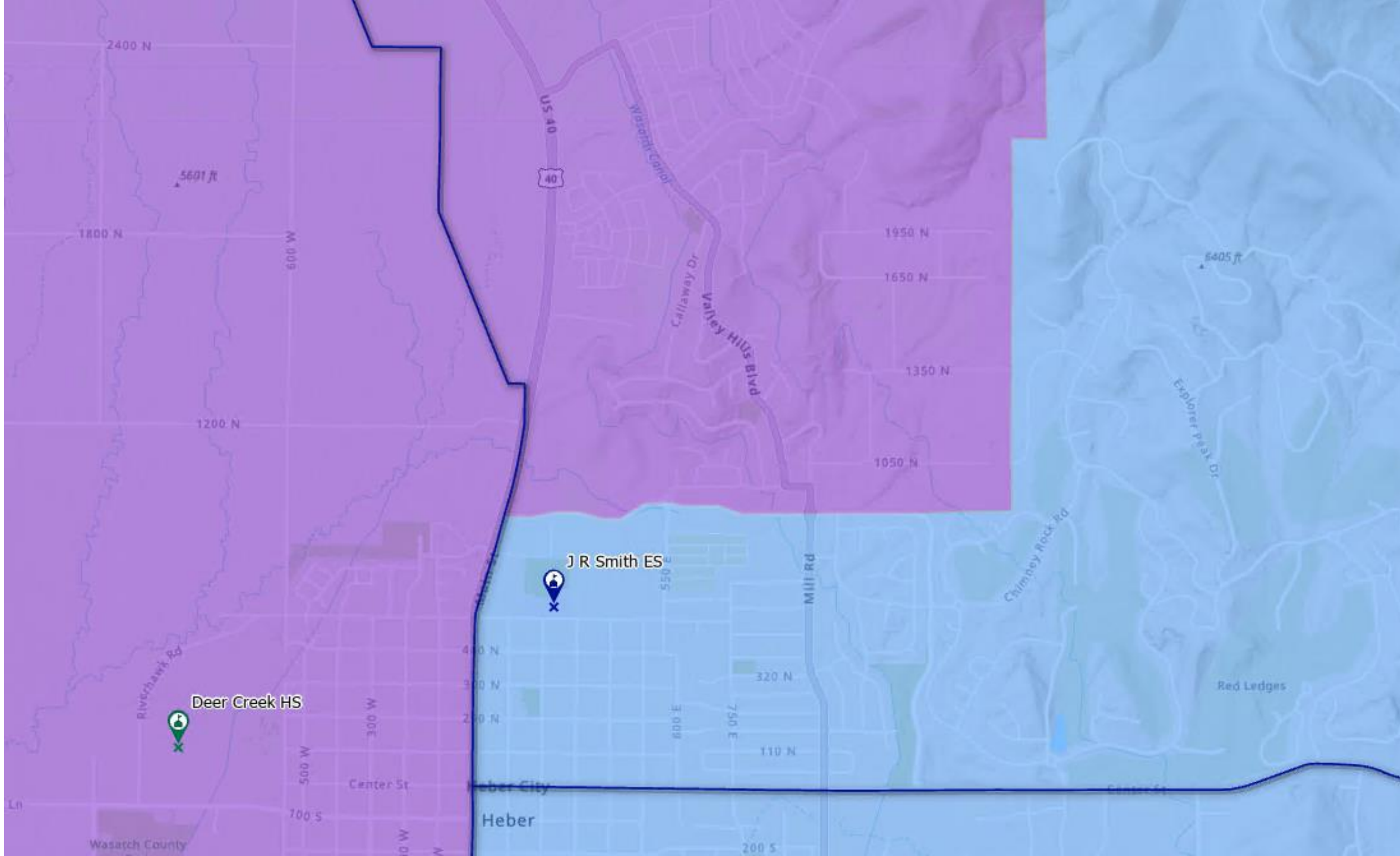


Scenario H

Plan H Scenario							
Name	2026 Students	2028 Students	2030 Students	%Div	%ELL	%F/R	%Gender
Deer Creek HS	1346	1268	1204	28.2%	6.6%	29.6%	48% / 52%
Wasatch HS	1276	1309	1353	21.2%	4.2%	20.1%	49% / 51%
Rocky Mountain MS	868	890	817	28.1%	9.0%	33.1%	52% / 48%
Timpanogos MS	836	827	781	22.7%	7.2%	26.4%	47% / 53%







US 40
40

5601 ft

1800 N

600 W

1200 N

1950 N

1650 N

1350 N

1050 N

6405 ft

J R Smith ES



Deer Creek HS



400 N

300 N

200 N

500 W

Center St

700 S

300 E

100 W

Heber City

Heber

Mill Rd

550 E

600 E

3750 E

110 N

Crimby Rock Rd

200 S

Explorer Peak Dr

Red Ledges

Wasatch County

